

# EXPERIENCE THE WILD



PolinSafariParks





**PolinSafariParks**

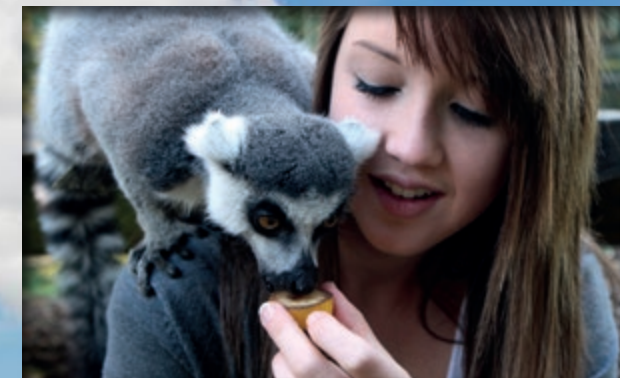
## **Features**

**New Generation Zoos**  
**Wild Life & Safari Parks**  
**Wild Cat Parks**  
**Tropical Reptile Houses**  
**Alligator Parks**  
**Bird & Butterfly Parks**



# A PLACE WHERE YOU CAN EXPERIENCE THE WILD NEW GENERATION ZOOS

Unlike traditional zoos, New Generation Zoos, Wildlife and Safari Parks allow visitors to gather closely with the exhibited living creatures separated only by glass and acrylic panels. Without the use of any iron bars, the visitors experience a more intimate connection with the wild. These transparent surfaces are integrated with special security features that provide a safe and enjoyable experience for both the visitors and the wild creatures. Not only are the wildlife areas secure, but they are also very spacious and comfortable, having been designed based on the individual needs of each creature. Maintaining these natural environments is extremely important and all the wildlife areas provide specific decorations, landscaping, shelters and activities that accurately depict habitats and promote activity and longevity. We design these areas artfully to provide visitors with a beautiful visual experience as well. Some of the natural life parks offering different scenery and concepts are African Savannah, Canyons in the United States, and Egyptian Desert. These New Generation Zoos are becoming the new standard, replacing traditional “iron bar” zoos worldwide.







# THE WILDEST AND THE MOST BEAUTIFUL WILD CAT PARKS

Wild Cat Parks offer a unique, face to face experience with largest exotic cats of the world. Among the majestic wild cats featured in these parks are lions, tigers, leopards and jaguars. These large predators are frequently the most popular creatures in zoos all over the world. In Wild Cat Parks, visitors experience close encounters with their favorite wildlife creatures in a safe environment using specialty glass walls. These design and safety measures are far more aesthetically appealing than the unsightly electrified wire nettings and distant shelters that are typical of traditional zoos.





# THE MOST POISONOUS, INTERESTING AND COLORFUL CREATURES **TROPICAL REPTILE HOUSES**

Tropical Reptile Houses exhibit the world's most deadly, colorful, exotic and reclusive species including poisonous snakes, amphibians, scorpions, spiders, reptiles and other unusual creatures. These special complexes are designed to incorporate elements of these creatures' natural habitats and provide visitors the opportunity to experience a variety of exotic creatures living on land and/or in water in one impressive exhibit.

Equipped with customizable special security systems for both creatures and visitors, the Tropical Reptile House provides safe spaces in which visitors can experience the beauty and danger of the world's reptiles. In addition to the design and supply of the Tropical Reptile House, Polin Safari Parks also offers ongoing facility maintenance to ensure the health and longevity of these wonderful creatures.







# THE STRONGEST AND THE MOST POWERFUL SPECIES **ALLIGATOR PARKS**

Alligator Parks offer an amazing and unique experience by blending million-year-old fossils with one of the most powerful species in the world: alligators. Visitors are exhilarated and educated as they closely observe these exotic predators with their prehistoric appearances and incredible hunting abilities. These close encounters are made possible by state-of-the-art technological innovations such as special observation window and transparent bridges. Unlike traditional exhibits of distant observation and iron fences, visitors truly experience the strength of these menacing predators in their natural habitat.





# THE MOST EXOTIC, DELICATE AND GENTIL **RAINFORESTS** **BIRD & BUTTERFLY PARKS**

Bird and Butterfly Parks transport visitors to realistic African, South American or Asian rainforests. In these replica forests, visitors get the true temperate or tropical rainforest experience while walking among exotic creatures and vegetation. In this truly immersive adventure, an unbelievable variety of flora and fauna—including birds, fish and butterflies—work together to create a unique and exhilarating experience.







## What is WildPark?

WildPark is a dynamic wildlife-themed attraction and discovery center designed for outdoor or indoor spaces where wild creatures are exhibited. Polin's WildPark brand offers a variety of exotic creatures found in tropical rainforests, including giant snakes, small mammals, crocodiles and colorful birds. Of the species exhibited, the most dangerous and poisonous provide the most exciting close-up experiences. In addition to the rainforest habitat, WildPark can also be enhanced with thematic aquariums, aquarium tunnels and paludariums. These exhibits can easily be integrated into many entertainment venues such as zoos, open and closed attraction centers, theme parks, or shopping centers.

WildPark also provides curated creature services including animal care, histories, appropriate life support systems, specially-designed natural habitats, special sound and light effects and thematic decorations for each creature.

Polin Safari Parks offers detailed business solutions and support for WildPark including ticket office software, accounting integration, souvenir photo operation, souvenir collection, brand communication, and business plans.

From concept through to completion and beyond, WildPark is dedicated to the successful growth and operation of its partners around the world.



## Advantages of the brand

With WildPark, Polin Safari Parks teams up with one of the world's leading experts in building and operating wildlife themed attraction centers. Below are just a few of the benefits this partnership provides;

- 1 A ready entertainment brand with Polin Safari Parks experience and guarantee
- 2 A reliable venture including maintenance-operation and financial data plans
- 3 The ability to share animals with other locations
- 4 Staff training
- 5 Qualified staff support by specialized technicians
- 6 Business operation and information collaboration with other locations
- 7 Annual and seasonal central advertising & promotion activities

## Other Opportunities

If requested, Polin Safari Parks can provide additional services that create value for WildPark brand owners. Some of these services may include;

- 1 Care of the whole facility, terrariums and creatures
- 2 Ticket office software and accounting integration
- 3 Souvenir collection and management
- 4 Green-screen souvenir photo operation and management
- 5 Operation and management of animal husbandry
- 6 Cafe & Bistro enterprises
- 7 Operation and management of XD Cinema







LION



WHITE LION



SIBERIAN TIGER



MEERKAT



RING TAILED LEMUR



GIANT ANT EATER



WHITE GOLDEN



JAGUAR



PUMA



ARMADILLO



PANGOLIN



PORCUPINE



HYENA



GRIZZLY BEAR



GIRAFFE



AGOUTI



SWINHOE'S STRIPED SQUIRREL



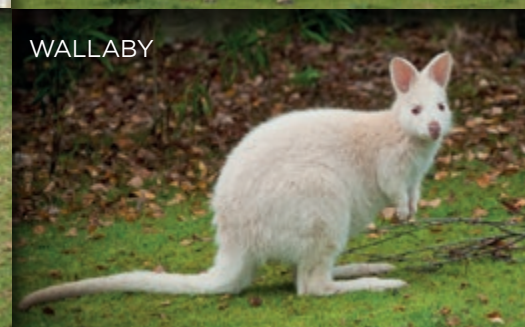
EUROPEAN BADGER



ZEBRA



RED KANGAROO



WALLABY



SILVERY MARMOSET



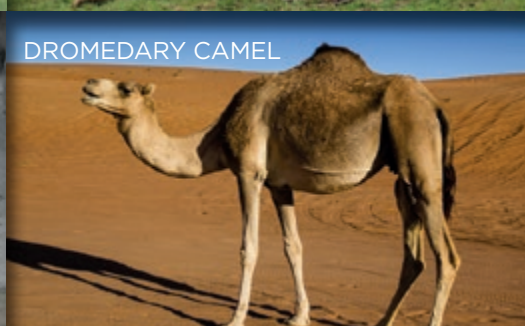
GOLDEN LION TAMARIN



TAMARIN



MALAYAN TAPIR



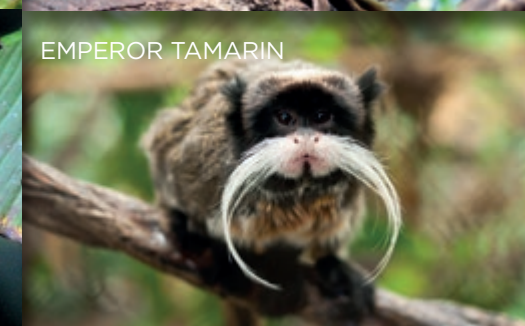
DROMEDARY CAMEL



DOMESTIC BACTRIAN CAMEL



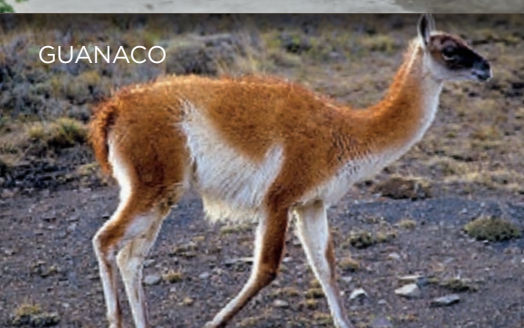
GOLDEN-MANTLED TAMARIN



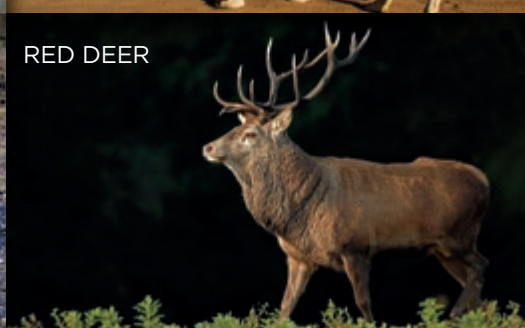
EMPEROR TAMARIN



POTTO



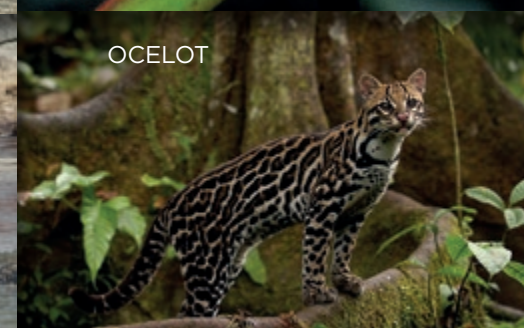
GUANACO



RED DEER



HIPPOPOTAMUS



OCELOT

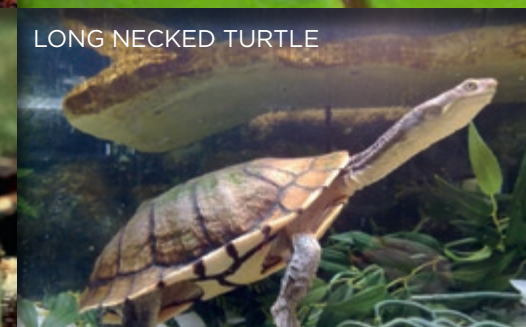


YELLOW MONGOOSE



MADAGASCAR FLYING FOX











## Eskisehir Zoo

Eskisehir, Turkey

Eskisehir Natural Life Park is located on a 19-acre plot in Sazova Cultural Park. There are 18 different animal exhibits, including a tropical center and outdoor and closed exhibition alternatives. Together, the Eskisehir Zoo (120) and the adjacent Sualti Dunyasi Aquarium (123) house 243 total animal species.



## Tarsus Zoo

Adana, Turkey

At 27 acres, Tarsus Zoo is the largest zoo in Turkey's Mediterranean region. What started as the expansion of an older zoo, quickly became a major update and expansive zoo exhibit consisting of large animals like wild cats, bears, wolves and camels.



## WildPark Antalya

Antalya, Turkey

The Tropical Reptile House in WildPark Antalya is a 1000m<sup>2</sup> indoor exhibit located on the terrace of the Antalya Aquarium. Opened in 2013, and housing 70 separate terrariums, this attraction is home to some of the most interesting creatures in the world including the biggest tarantula, emperor scorpion and green basilisk. As visitors walk through the attractions, light and sound effects help to create an exotic rainforest atmosphere.



## Adrenaline World

Ankara, Turkey

Adrenaline World is a perfect example of how WildParks work in conjunction with shopping centers and other animal exhibits. Located inside Nata Vega Shopping Mall and next to Aqua Vega Aquarium, this Tropical Reptile House is home to over 250 species including the golden poison frog, chameleons and giant pythons. The terrariums and paludariums that make up the first indoor tropical reptile exhibit in Turkey are designed to not only delight but also educate visitors of this unique space.





## VIA Lion Park

Istanbul, Turkey

The Via Lion Park project is currently in the planning stages to feature 9 different habitats for cats like lions, tigers, black leopards, jaguars, lynx and puma. The facility will also feature petting and feeding zones as well as animal medical health and support rooms. This park will provide an immersive visitor experience using glass panels and spacious designs.





## Jungle Istanbul

Istanbul, Turkey

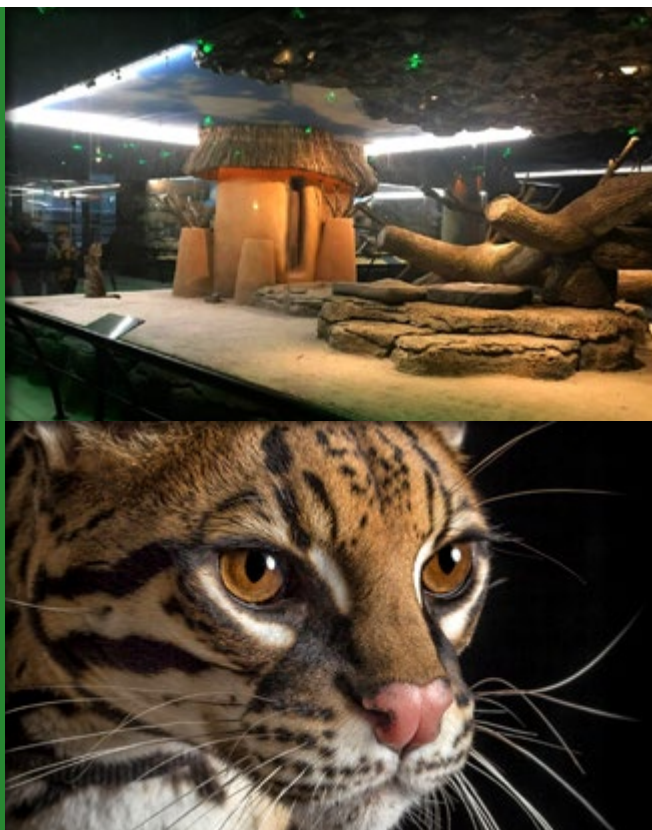
Jungle Istanbul houses over 400 animals from 100 different species. What differentiates this attraction from others is the focus on understanding and supporting endangered animals, something Polin Safari Parks cares deeply about. This exhibit is specifically designed to preserve the creatures and promote reproduction. Located inside one of the biggest shopping malls in Istanbul, this attraction shares its space with large aquariums and an aquarium tunnel, showcasing the wonderful variety of animal life this world has to offer.



## Nata Vega Zoo

Ankara, Turkey

Nata Vega Zoo is a 1000 m<sup>2</sup> collection of 12 indoor animal shelters located within a shopping mall and is one of the only spaces in the world where golden tamarins, armadillos, tropical apes and the world's smallest monkeys and birds can be seen.







# PolinSafariParks



PolinAquariums

by



PolinWaterparks

THE EXPERIENCE

Polin Waterparks T +90 262 656 64 67 F +90 262 656 64 75 M +90 532 443 80 23 Gebkim OSB Refik Baydur 6 41480 Dilovasi / Kocaeli, TURKEY

safariparks@polin.com.tr

polin.com.tr



polinwaterparks